




SLATE BELT ANNUAL LITTER CLEAN UP

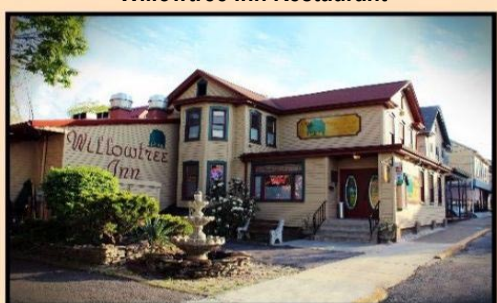




Saturday, April 18
10:00 AM - 1:00 PM

Join the effort and sign up to volunteer in one of the following municipalities:

- ✓ Wind Gap
- ✓ Bangor
- ✓ Pen Argyl
- ✓ Portland
- ✓ Upper Mount Bethel
- ✓ Plainfield

Register at slatebeltrising.org/cleanup

Willowtree Inn Restaurant

The Willowtree

570-476-0211 601 Ann St, Stroudsburg, PA

PLAINFIELD TWP. RESIDENTS!

FREE CURBSIDE COLLECTION COMING IN 2026!



As part of the new Host Municipality Agreement negotiated between WM and Plainfield Township in planning for the future of the Eastern Expansion, residents will receive new trash carts in Spring 2026 with free curbside collection beginning at the end of the current trash contract - July 1, 2026.

More information will be coming to mailboxes soon. Stay Tuned!

READ ABOUT MORE PLAINFIELD TOWNSHIP BENEFITS:
VISIT WWW.GRANDCENTRALLANDFILL.COM & SELECT "EXPANSION" TAB



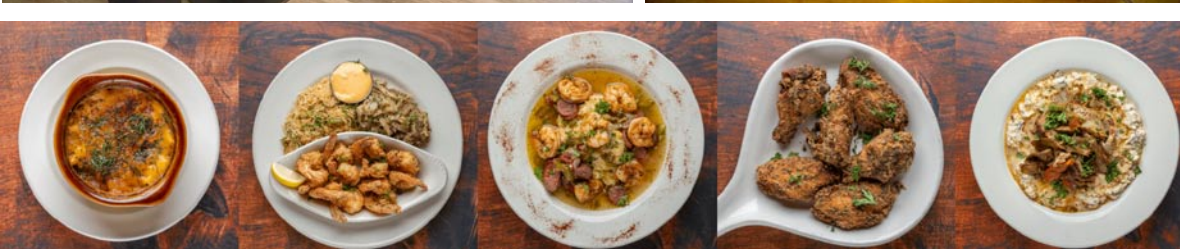

PEN ARGYL AREA SCHOOL DISTRICT RESIDENTS

The Pen Argyl Area School District is offering a property tax rebate program.

You may qualify if:

1. You have owned and occupied your home during the period for which you are claiming a rebate. Rebates are granted for your primary residence only; and
2. (a) You or your spouse (if living with you) were 65 years or older as of December 31, 2025; or
(b) You were a widow or widower during all or part of 2025 and were 50 years old or older as of December 31, 2025; or
(c) You were permanently disabled during all or part of 2025, and you were unable to work because of your medically determined physical or mental disability which is expected to continue indefinitely; and
3. Your total annual income, including the income of a spouse residing with you, was \$45,000 or less in 2025. (**IMPORTANT:** only report 50% of your Railroad Retirement benefits and 50% of Federal Social Security Act benefits); and
4. 2025/26 Pen Argyl School District Real Estate Taxes were paid in full.
5. Only one member of your household may file a claim.
6. Delinquent taxes **DO NOT QUALIFY**.

The deadline for filing an application is June 30, 2026
Applications are available at the Pen Argyl Area School District Office, or call the District Office at (610) 863-3191 option 7.



Legacy Vines Winery

Continued from page 1

- Experiences include:
- Guided wine tastings and wine flights
 - Food and wine pairing experiences
 - Paint & Sip events • Wine-making and sausage-making classes
 - Private events and celebrations
 - Catering and private venue rentals

In addition to wine, Legacy Vines Winery offers craft cocktails, mocktails, and beverages featuring local spirits, creating an inclusive experience for all guests. With reservation-based tastings and curated events, the winery aims to become a distinctive destination in the Pocono Mountains. The Davises also operate Sip & Play Transportation, providing safe transportation to wineries, breweries, and distilleries throughout the region so guests can explore the local beverage scene without worrying about driving.

Location: Legacy Vines Winery at Willie Mae's Place 1289 Route 209 Gilbert, PA 18331, Contact: 570-817-1582 | www.williemaesplace.com | www.legacyvineswinery.com

ABE Laboratories, LLC

The area's only locally owned state certified water testing laboratory for over 40 years

KEEP YOUR FAMILY'S WATER SAFE!

DO YOU HAVE:

Spotty Glasses • Cloudy Or Dirty Water • Brown Or Orange Stains
Pin Hole Leaks • Salty, Metallic Or Bitter Taste • Stomach Problems
Blue/Green Staining • Black Specks

610-837-7721
7596-B BETH-BATH PIKE, ROUTE 512 BATH, PA 18014
ABE-LABS.COM

Bring in this ad for \$25 any residential safe water bundle (restrictions apply)!