

US Chamber of Commerce Endorses Lisa Scheller for Congress

By Pierce Frauenheim

Northampton, PA – The U.S. Chamber of Commerce announced its endorsement of Lisa Scheller (R) to represent Pennsylvania's Seventh Congressional District at Horwith Trucks in Northampton, PA. The Chamber endorses pro-business candidates for federal office who will vigorously support public policy that will advance economic growth, support jobs, and promote fiscal responsibility.

"As the granddaughter of immigrants and the owner of a family business, Lisa Scheller understands the American dream and has a record of supporting the residents of Eastern Pennsylvania pursue their American Dreams," said U.S. Chamber of Commerce Great Lakes Region Vice President Kevin Courtois. "Lisa has demonstrated a commitment to supporting free enterprise, pro-growth solutions, and the American business community. The U.S. Chamber is proud to endorse Lisa Scheller and looks forward to partnering with her in the next Congress."

"As a businesswoman and someone who knows what it takes to sign the front of paychecks, I know the challenges American businesses are currently facing," said Lisa Scheller. "In Congress, I will use my business experience to help grow businesses and grow our economy. Now more than ever, small businesses need allies in Congress who understand the challenges Main Street America faces. I am grateful to the U.S. Chamber of Commerce for their endorsement, and I look forward to being a voice for a pro-growth economic agenda in Congress."

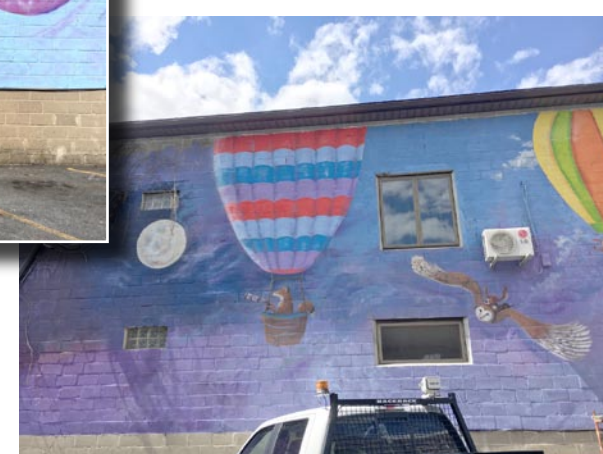
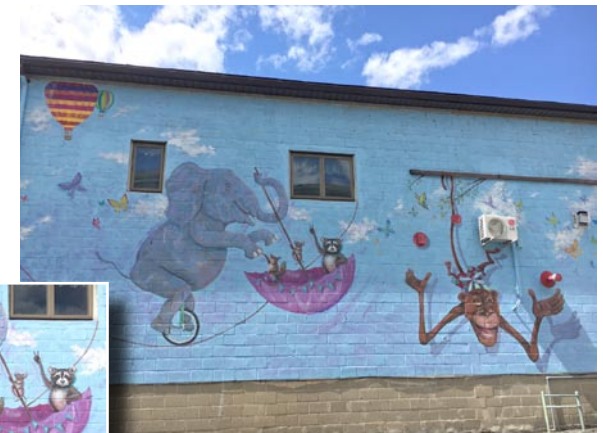


Murals

Continued from page 1

boroughs of Wind Gap, Pen Argyl, Bangor, and Portland. Other recently completed projects funded by SBR include a fantastic sunrise mural on the side of a commercial building at 200 W Main Street in Pen Argyl; a mural of a mountain biker on the side of Cycle Masters in Wind Gap; and murals on the picnic tables at Bangor Memorial Park Pool! All are the work of Sarah Lanier, another talented local artist.

Slate Belt Rising has funded over a dozen murals in the Slate Belt to date. We strive to achieve community and economic development in the area and increase the quality of life for all, especially the under-resourced and under-privileged. Under our current six-year community plan, SBR has leveraged over \$1.4 million in public and private funds for investment in the region, generating tremendous positive impact in the community.



WE BUY \$CRAP METAL!
JUNK CARS TOO!!!

- Copper
- Brass
- Aluminum
- Stainless
- Lead
- Cast Iron
- Motor Blocks
- Light Iron
- Prepared Steel
- Export Steel
- Container Service

J.F.R.



Since 1974
SALVAGE

610-863-6071

www.jfrsalvage.com

M-F 7-4:30 • Sat 7-Noon

6500 Sullivan Trail

Wind Gap, PA 18091